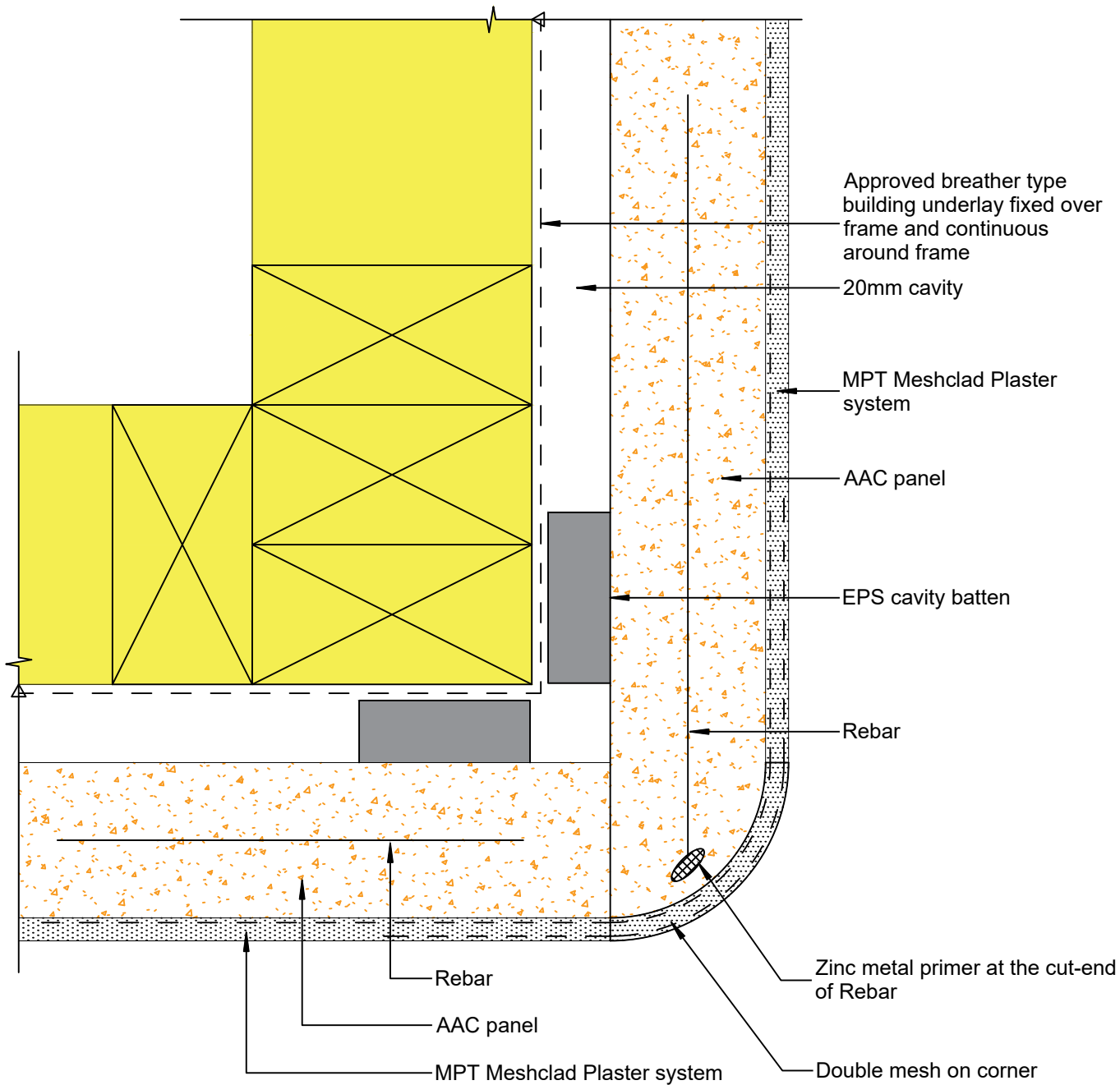


Exposed cut-ends for rebar to be coated with Zinc Primer



© 2019 Petros Holdings Ltd



61 Hillside Rd, Wairau Valley
Auckland 0627
New Zealand
www.mineralplaster.co.nz Ph: 0800 25 23 678

MPT Petrapanel Corner - External Round Corner

AAC 50 or 75 mm Panel

Reference: A_F002

Date: January 2020

Scale: 1 : 2 @ A4

Revision: 2

TERMS OF USE Disclaimer: This information is intended solely as a guide for use of MPT products. Before using you should ensure that the product is suitable for use in the specific application. Nothing in this information constitutes a statement of fitness for particular purpose and appropriate expert advice is to always be obtained. Petros Holdings Ltd makes no warranty regarding the use of this information. This drawing is the property of Petros Holdings Ltd. It must not be copied in any form except for the purpose of specifying the use of MPT products in construction projects.