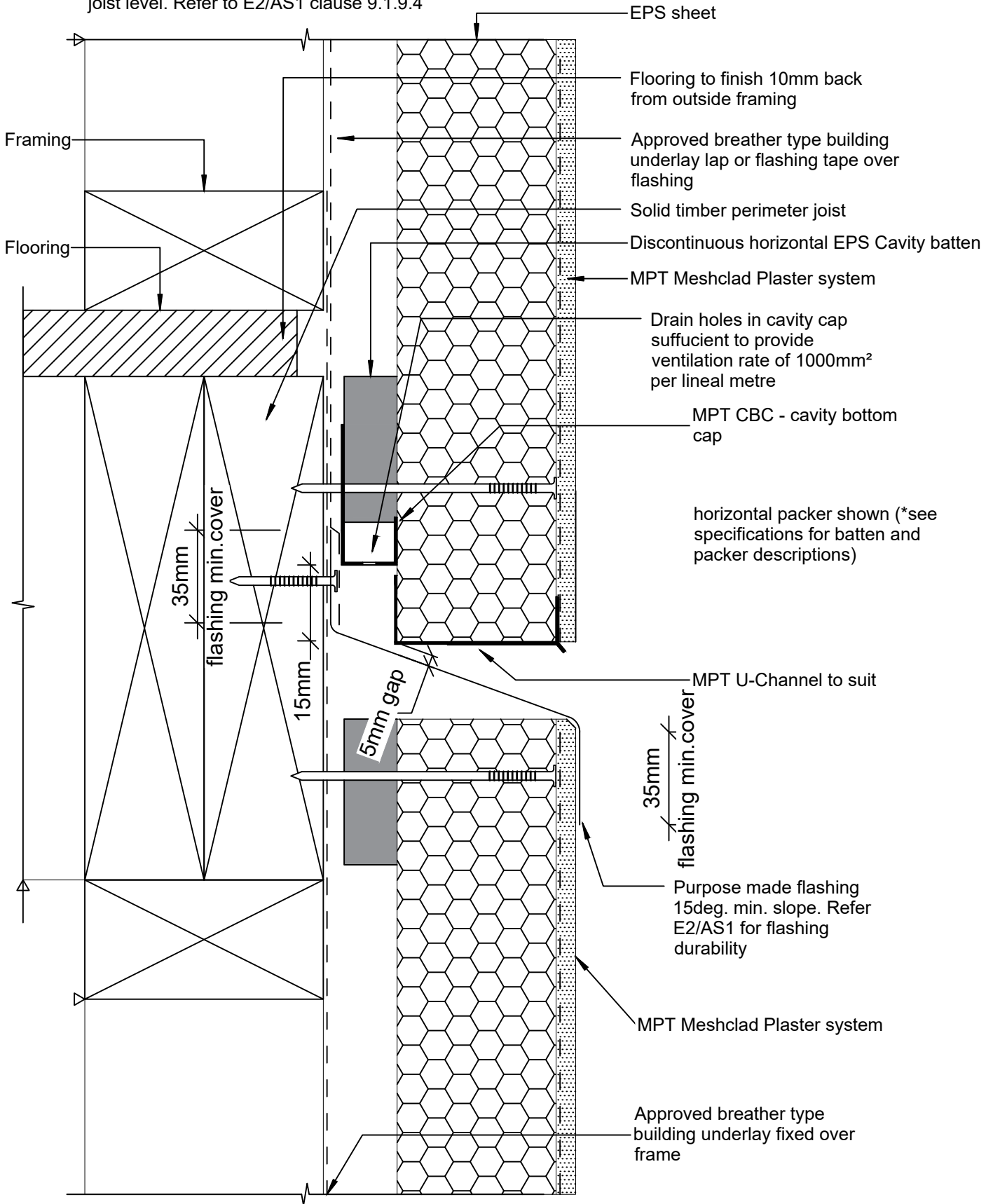


Note :
 This detail is required at the second storey upper joist level. Refer to E2/AS1 clause 9.1.9.4



© 2019 Petros Holdings Ltd



61 Hillside Rd, Wairau Valley
 Auckland 0627
 New Zealand
 www.mineralplaster.co.nz

Ph: 0800 25 23 678

MPT Meshclad System

Joint - Inter-Storey Drained Greater than 2 storeys

Reference: MPT_M052

Date: June 2019

Scale: 1 : 2 @ A4

Revision: 2

TERMS OF USE Disclaimer: This information is intended solely as a guide for use of MPT products. Before using you should ensure that the product is suitable for use in the specific application. Nothing in this information constitutes a statement of fitness for particular purpose and appropriate expert advice is to always be obtained. Petros Holdings Ltd makes no warranty regarding the use of this information. This drawing is the property of Petros Holdings Ltd. It must not be copied in any form except for the purpose of specifying the use of MPT products in construction projects.