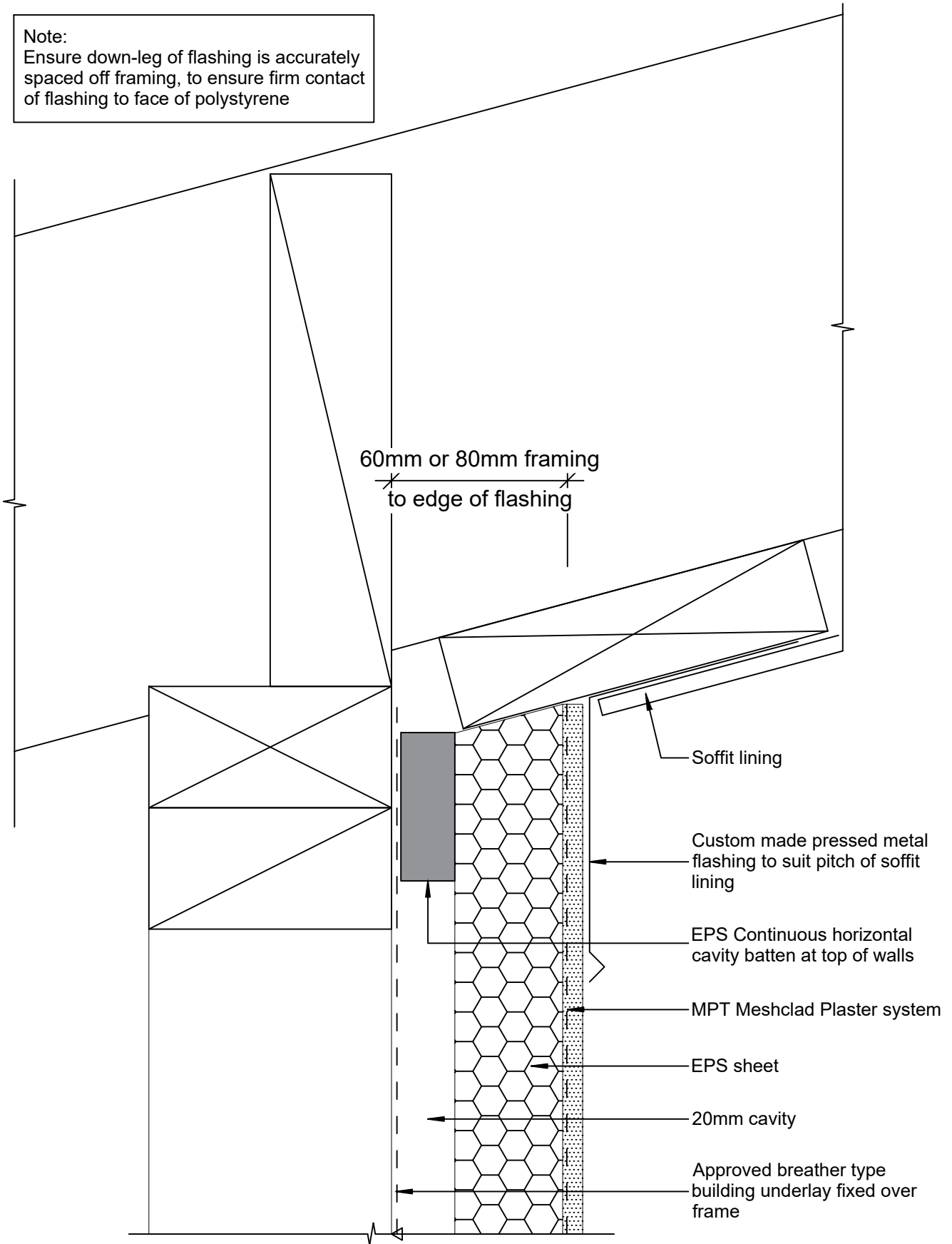


Note:

Ensure down-leg of flashing is accurately spaced off framing, to ensure firm contact of flashing to face of polystyrene



© 2019 Petros Holdings Ltd



**Mineral
Plaster**
Technology

61 Hillside Rd, Wairau Valley
Auckland 0627
New Zealand
www.mineralplaster.co.nz

Ph: 0800 25 23 678

MPT Meshclad System

Soffit - Reverse Raked

Reference: MPT_M115

Date: June 2019

Scale: 1 : 2 @ A4

Revision: 2