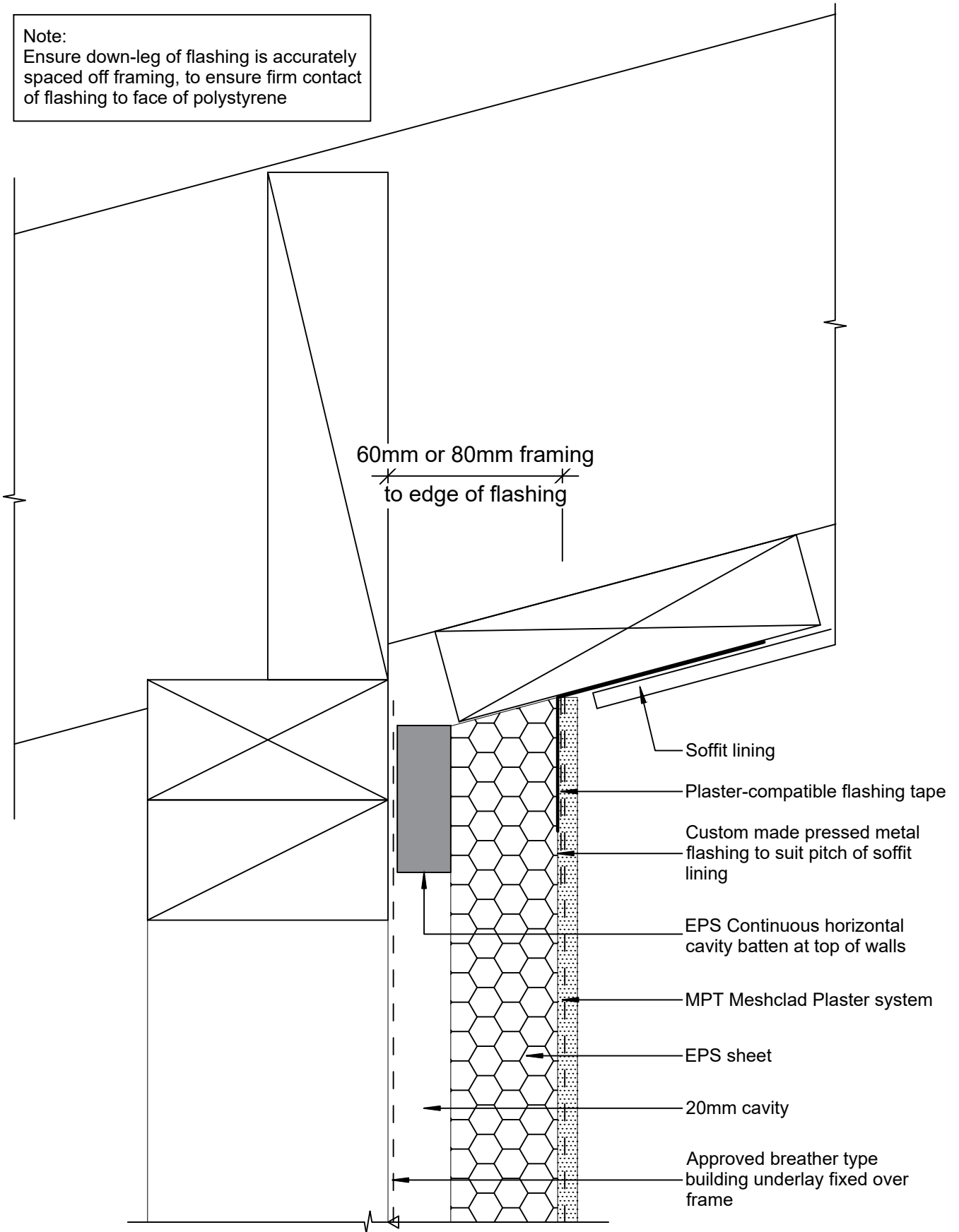


**Note:**

Ensure down-leg of flashing is accurately spaced off framing, to ensure firm contact of flashing to face of polystyrene



© 2019 Petros Holdings Ltd



61 Hillside Rd, Wairau Valley  
Auckland 0627  
New Zealand  
www.mineralplaster.co.nz

Ph: 0800 25 23 678

## MPT Meshclad System

Soffit - Reverse Sloped Soffit - Option 2

Reference: MPT\_M116

Date: June 2019

Scale: 1 : 2 @ A4

Revision: 2

TERMS OF USE Disclaimer: This information is intended solely as a guide for use of MPT products. Before using you should ensure that the product is suitable for use in the specific application. Nothing in this information constitutes a statement of fitness for particular purpose and appropriate expert advice is to always be obtained. Petros Holdings Ltd makes no warranty regarding the use of this information. This drawing is the property of Petros Holdings Ltd. It must not be copied in any form except for the purpose of specifying the use of MPT products in construction projects.